

FICHE SIGNALÉTIQUE « Z1 »

INTERNATIONAL APPALACHIAN TRAIL

Customer info for reservation

NAME: **La Chute campground**
Anse-à-Valleau

TOPO MAP: Gaspé-Coast

OPERATION DATES: *June 24th to October 11th*

PLACES AVAILABLE:

**1 3 walls shelter (lean-to) which
can accommodate 4 to 6 persons**
**2 platforms which can accommodate 2 tents of 2 persons
(8 peoples max)**

COST:

\$10 / tent, per night
\$15 / person, per night for a lean-to of 3.7m X 3.7m



LOCATION: At 5 km of the Pointe-à-la-Renommé lighthouse, on the Saint-Héliér portage

NEAREST ROAD ACCESS: *at 1 km of Road 132*

WALKING DISTANCE FROM THE NEAREST ROAD ACCESS: **1 km**

NEXT SECTION WEST : *Des Cascades refuge* DISTANCE: **24.8 km**

NEXT SECTION WEST : *Saint-Yvon* DISTANCE: **13.4 km**

NEXT SECTION EAST : *Le Zéphir refuge* DISTANCE: **8.3 km**

NEXT SECTION EAST : *Anse-à-Valleau* DISTANCE: **12.3 km**

Customer info

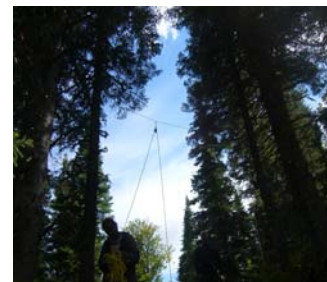
The campground includes 1 lean-to (3 walls shelter) of 3.7 m X 3.7 m which can accommodate 4 to 6 persons, and 2 wood platforms of 3.7 m X 3.7 m which can accommodate 8 persons. 2 tents of 2 persons per platforms. The tents must be installed on the platform. There's also a dry pit toilet on the campsite. The maintenance is the user's responsibility.

A food support (anti-bear) is also on the campground. It is use to hang at 4 m from the ground the hiker's food, to keep the bears and other wild animals away.

You must bring your own tent, sleeping bag, mattress, camping stove (camping heater), matches, pocket lamp, plates and utensils, food, toilet paper, first aid kit.

There's a watering place near the campground. The water may not be drinkable: it's recommended to boiled water or even treated it with some product. It's allow to do fire only in the specific spots and only if the drought level is not too high.

More info: IAT Office: (418) 562-7885



FICHE SIGNALÉTIQUE « Z1 »